

Cold Blue

Solo Piano

(2019)

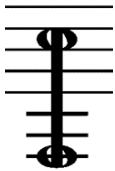


Adam Lee

Composer's Note

I have always been fascinated by the natural world and this piece is a product of that fascination. Recently I have been investigating glacier caves which are caves that are completely formed within a block of ice, such as a glacier. I have been looking, in particular, at the glacier caves in Iceland, and reading about them and watching videos has left me inspired and in awe of these amazing natural structures. I began to imagine what a journey through one of these caves would be like and was struck with both a sense of wonderment and fear at the same time and so these feelings were the inspiration for this piece, along with the image on the cover - a cold blue scene. I used clusters in the bass to mimic what I imagined to be the low rumbling sound, created naturally by the structure and wind passing through it. The more dissonant intervals represent the feeling of threat and danger while exploring the caves and the dissonant chords in the upper register of the piano represent the tiny icicles, flashes of light and drops of water. I used the more tonal chords and intervals to represent the feeling of wonderment and the louder dynamics to add to the sense of danger, as well as the threading sound of a screwdriver being placed against the bottom A string after being plucked. The fade away at the end suggests a retreat from the scene, but the combination of consonant and dissonant chords suggest an appreciation of this incredible natural structure, but also a sense of fear that can't be shaken.

Guide to Effects

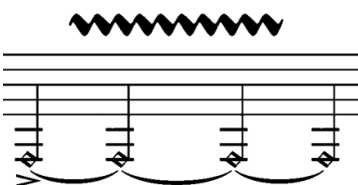


Cluster – using the forearm or the palms of both hands, press down on every key within the specified interval.

5"

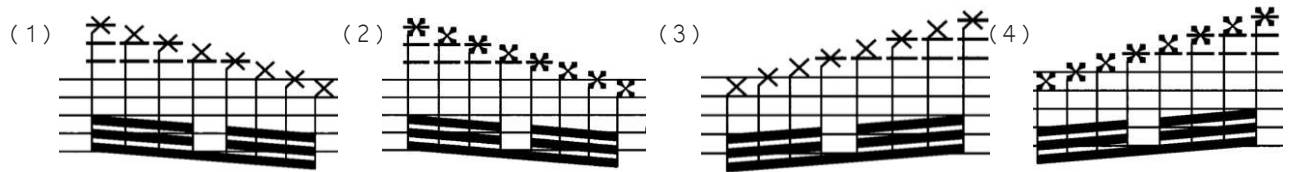


Play notes at random – play quavers for for seconds but the pitches are random and at the performers choice (within the specified range).



Plucked string and screwdriver effect – pluck the bottom A string with your index finger and place the metal part of a small screwdriver against the left hand side of the string. The wavy line above indicates when the screwdriver should be placed against the string, the duration it should be held for and when it should be taken off the string.

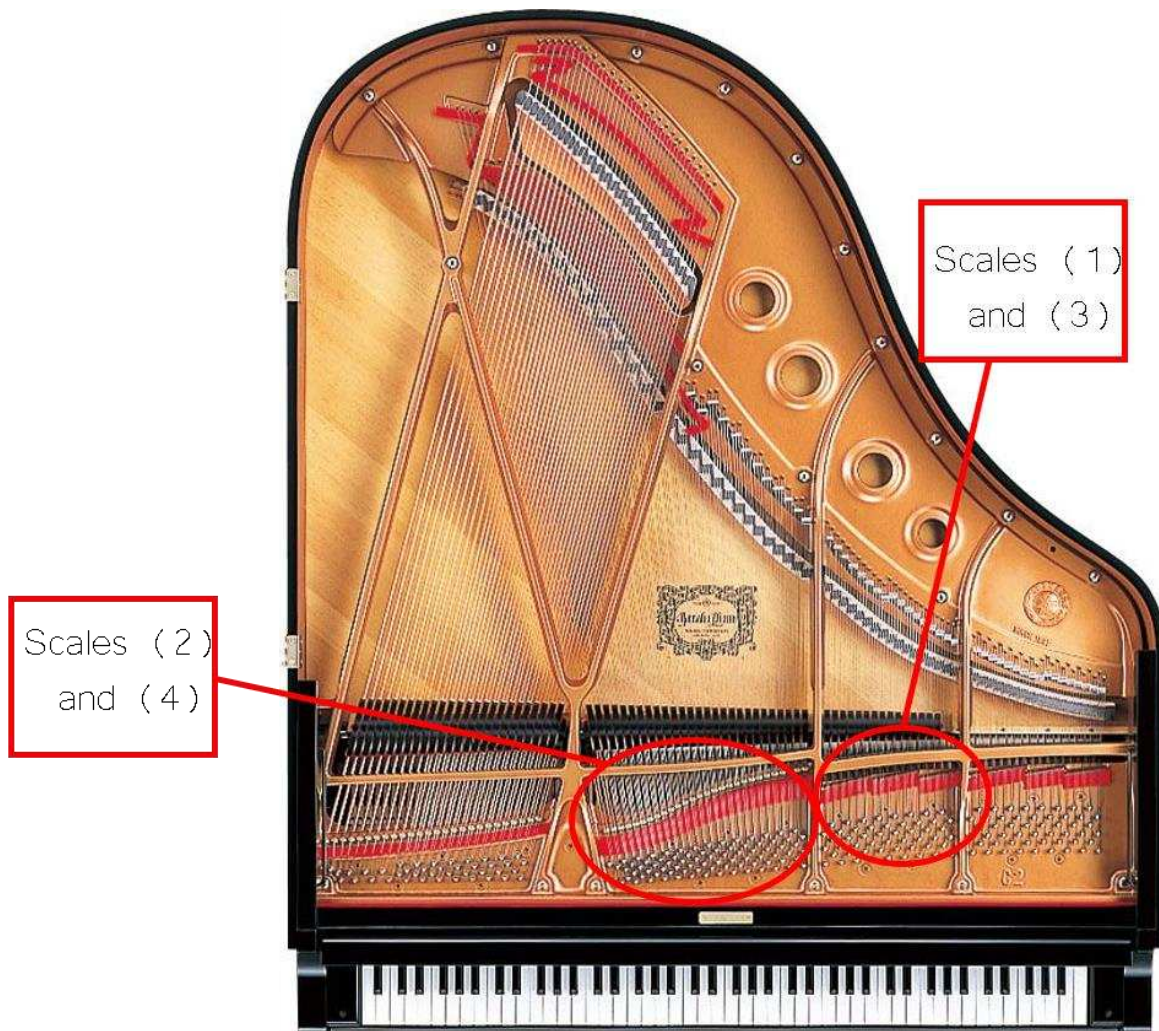
Strummed strings effect



Use your index or middle finger and press down firmly against the strings in the area of the piano specified in the diagram below and then run your finger along the strings in these directions:

- downwards scales, seen in examples (1) and (2), indicates running the finger from right to left.
- upwards scales, seen in examples (3) and (4), indicates running the finger from left to right.

The diagram below indicates where each strummed scale is played:



Only strings between the tuning pins and the red fabric should be strummed for this effect.

Piano image from Yamaha Music USA - <https://www.pinterest.co.uk/pin/72690981460114104/>

Ice cave image from Guide to Iceland - <https://guidetoiceland.is/nature-info/ice-caves-in-iceland>

Cold Blue

Adam Lee

Freely (c. ♩ = 60)

The musical score for "Cold Blue" is presented in five systems, each with a grand staff (treble and bass clefs). The piece is marked "Freely" with a tempo of approximately 60 beats per minute. The notation includes various dynamics such as *ppp*, *pp*, *mf*, *p*, *f*, *mp*, and *P*. Articulations like accents and staccato are used throughout. The score features several instances of *8va* (octave up) and *8vb* (octave down) markings, along with *Red.* (Reduction) markings. The piece concludes with a *rit.* (ritardando) marking. The key signature is one flat (B-flat major/D minor).

Musical score for piano, page 2. The score is divided into three systems, each with a treble and bass clef staff. The first system begins with a treble clef staff containing a fermata over a half note, followed by a triplet of eighth notes marked *ff*. A box labeled "5''" contains a half note marked "15^{ma}". The bass clef staff has a fermata over a half note, followed by a series of chords marked *p*, *ff* (with a wavy line), and *p*. A bracket below the bass staff is labeled "lift pedal very slowly". The second system starts with a treble clef staff containing a fermata over a half note, followed by a series of chords marked *p* and *pp*. The bass clef staff has a series of chords marked *p* and *pp*. The third system continues with a treble clef staff containing a series of chords and a fermata over a half note, followed by a series of chords marked *ppp*. The bass clef staff has a series of chords marked *ppp*. Pedal markings "Ped." are present at the end of each system. Dynamic markings include *ff*, *p*, *pp*, and *ppp*. Performance instructions include "lift pedal very slowly".